

TIER DROP NEWSLETTER



JUNE 2023

March 2023 Residential Gallons Per Capita
Water Use: 52.28 Gallons

Note: Water savings data reflects water use three months in the past. Also, "gallons per capita" is the standard of "measure" for tracking water conservation efforts. **The State has determined our water use per person per day is 47 gallons by 2025, and 42 gallons by 2030. Keep saving, Joshua Tree!**



OUR MISSION STATEMENT:
To provide, protect, and maintain
Joshua Tree's water - our vital
community resource.

*Conserve water like a tortoise~
not a hare...*

And stay hydrated and carry water with you—everywhere.

Remember: WATER IS LIFE!



Brought to you by your water providers: Joshua Basin Water District, HI-Desert Water District, Bighorn Desert-View Water Agency, 29 Palms Water District, and the Mojave Water Agency.

IN THIS ISSUE:

- Upcoming Events and Meetings
- High-Use Water Season is upon us
- It's LIHWAP Day!
- June Water Saving Tips
- June's National Hydration Day
- Free tree seedling give-away event
- Vacation time? Lock your meter!
- In Case You Missed It
- Curious Minds Want To Know.
- Planning a vacation? Lock your meter!
- Growing the Citizen's Advisory Council
- Your Leadership in Action
- June Farmers' Market Booth
- C.I.R.P. Update
- June Desert Gardening Tips
- Plant of the Month

Upcoming Events and Meetings:

Board of Directors meetings:

- Regular Meeting -
Wednesday, June 7 at
5:30 PM
- Regular Meeting -
Wednesday, June 21 at
5:30 PM
- Finance Committee -
Wednesday, June 14 at
9:00AM
- Water Resources & Ops-
Wednesday, June 14 at
10:30AM

Visit www.jbwd.com for
agendas, Zoom links, and
other info.

High Use Water Season is upon us

Next month we'll share many
more tips to help you save, but
for now, start checking your
water meter weekly for
potential "sneaky leaks". Visit:
[How to read your water meter](#)



**JOSHUA BASIN
WATER DISTRICT**

*Proudly providing water from an ancient
source...well into the future*

JOSHUA BASIN WATER DISTRICT'S

LIHWAP

LOW INCOME HOUSEHOLD WATER ASSISTANCE PROGRAM

DAY

- FREE COFFEE AND DONUTS -

WE WILL ALSO PROVIDE ASSISTANCE FOR
UNITED WAY DISCOUNTS

8 AM - 12 PM

JUNE 8, 2023

JBWD

BOARD ROOM

**61750 CHOLLITA RD
JOSHUA TREE, CA**

ITEMS TO BRING (REQUIRED)

- 1) Current Water Bill
- 2) Household income for last 4 weeks
(noncash benefits, state/federal help,
SNAP, EBT, IHSS, SSI, SSDI)
- 3) Current Government Photo ID

OUR FRIENDLY STAFF AND LIHWAP REPRESENTATIVES
WILL ASSIST YOU WITH THE APPLICATION!

WATER SAVING TIPS FOR JUNE

Water Saving Tips During Hot Weather Water Play



Lower pool water levels to reduce water loss caused by splashing



Cover your kiddie and larger pools to keep the water cleaner longer, and to minimize evaporation to avoid refilling water levels

Mark your water levels with a grease pencil or permanent marker and monitor for leaks daily & fix!



Enjoy water play at public parks where they treat & recycle the water for splash parks (like JT Community Center)



Treat your pool's water to keep it clean, instead of always dumping and refilling it

Play in sprinklers where trees and plants will benefit from the water runoff

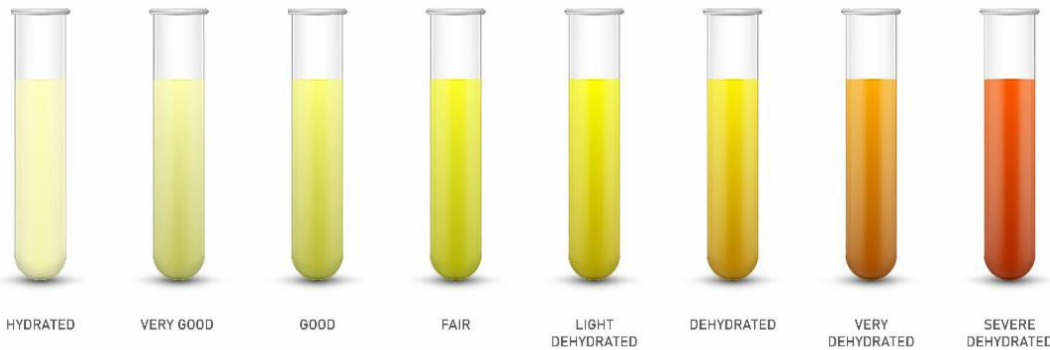


Don't just run the hose! You can waste up to 10 gallons of water per MINUTE! Instead, water your plants!



JUNE 23RD IS NATIONAL HYDRATION DAY

URINE COLOR CHART



Can you PASS the TURGOR Test?



The main way to test skin turgor is to lightly pinch your skin, usually on your arm or abdomen. If it takes longer than usual for the skin to bounce back, it *could* be a sign of dehydration.

Trying to stay or get healthy? The number one thing everyone can do is to be properly hydrated. Many rules have come and gone regarding how much water one should drink on a daily basis--with just as many variables that negate some of those recommendations. The best rule of thumb is to monitor your own water "output" (aka: your urine) and do what is best for *your* lifestyle and health needs. The chart

above is an excellent guideline to use, and the Turgor Test (left), while not 100% dependable, is a quick way to double check yourself.

UNIVERSITY OF CALIFORNIA
Agriculture and Natural Resources



Do you Have Space for a Shade Tree?

We're Giving Away Free Trees
to the Public



Saturday, June 10, 2023



3:00 PM – 4:30 PM



Joshua Basin Water District
61750 Chollita Road
Joshua Tree, CA 92252



Limited Supplies

To ensure a tree, please pre-register using this link

<https://ucanr.edu/freetreesjoshuatree>

or QR Code:



The University of California Division of Agriculture & Natural Resources (UC ANR) is
an equal opportunity provider

**CURIOUS
MINDS**



IN CASE YOU MISSED IT...

Wildcrafting seeds are blowing in the wind...

Students attended our annual four-part Wildcrafting Course this past May to learn how to grow native plant seeds. This course was co-hosted by the JTNP Nursery specialists and covered seed harvesting, propagation, and invasive plants. For many native plants, summer is seed harvesting time.

If you missed out, you can find the 12 *very basic* steps posted throughout our Waterwise Demonstration Garden.

The garden is open to the public during regular business hours.



WANT TO KNOW:

Often, at our Farmers' Market booth or on social media, we get good questions that others may be asking. Here's more of a sample:

Q: "Spring was seemingly late this year, so getting our new plants in the ground was delayed. As the summer heat is right around the corner, which is better: inorganic mulch (like rock) or organic mulch?"

A: While the answer to this question lands heavily on preference, there are noted differences--pros and cons--tied to both.

Time, material costs, muscle power, esthetics, and the plant's soil needs are all considerations.

Bottom line: either type of mulch helps to save water. To review the entire discussion over mulching, visit:

[Mulch: Rock vs. Organic Matter](#)

VACATION TIME? LOCK YOUR METER!

Simple steps to locking your meter:

1. Locate your water meter
2. Carefully open the lid to it (watch out for nesting insects and reptiles)
3. Brush away any residual dirt or sand if present
4. On the house side of the meter move the



Whether you plan to be gone for an extensive vacation, or use your dwelling only for part-time visits, consider locking your meter to prevent water mishaps (leaks) that can quickly damage property, or lock it off with a hardy lock and key to prevent nefarious activity (water theft) at your water bill's expense!

lever with an open ring to align with the open ring on the pipe leading to the house.

5. Apply a personal lock uniting the two rings.

If your property is on a landscape watering timer, this may not be desirable. However, with a trusted individual and a combination lock, you might be able to protect your property from unexpected water loss while still managing irrigation for your plants with an occasional visit from your trusted friend or neighbor.

For the record: the District does permit water meter customers to lock off their water on their property side of the meter. Think about it.

Growing the Citizen's Advisory Council

Would you like to volunteer to help protect our water? Your valuable input is needed!

Joshua Basin Water District has a diverse group of concerned and committed ratepayers who voluntarily review and advise the JBWD Board of Directors on the issues facing our Water District—*from the customer's perspective*. This group, called the Citizen's Advisory Council (or CAC), is committed to protecting the interests of the ratepayers, as well as, protecting and maintaining our local water -- the most important resource we have.



In the past, the CAC has played an active part in helping to frame rate increases, to initiating our low-income water assistance program, and have helped in determining the direction of public education and outreach activities.

As we look to begin the new fiscal 2023-2024 year, the CAC is seeking a few new concerned and committed volunteers to join the Council and help make a difference.

The Council meets on an *average* of six times a year (*usually* every other month), with regular meetings slated from 5 PM-6PM on the second Tuesday of the months that they meet.

Interested individuals must have a JBWD water account, submit a brief application which is then first reviewed for consideration by the current CAC, and then the Board of Directors.

For more information or an application visit: [CAC Information and Application](#), or stop by the Saturday Farmers' Market and speak to a JBWD representative.



YOUR LEADERSHIP IN ACTION

Recent Board Action Items of Note:

"JBWD's electric bill's outside auditing assistance services"

The Board of Directors deliberated on whether or not to contract for outside auditing services that maintain and enlist the help and use of specific computer software to assist water providers in monitoring utility bills. These bills are complex, and are often presented with hidden overcharges. The Board ultimately voted 4-1 in favor (with V.P. Doolittle opposed and in favor of waiting for the advantages of AI technology, instead).

Background:

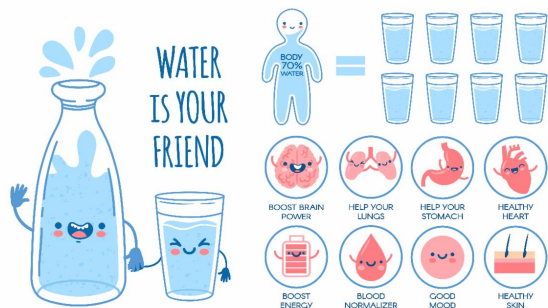
Photo caption: General Manager Johnson sits next to two stacks of SCE electric bills sent to the District.



These bills involve complicated charges and calculations that regular residential bills are not subjected to. Billing errors are seemingly common, and require weeks of hours of staff time to comb through and evaluate.

The contracted auditing services require a 3-year commitment, with no fees. If they find any irregularities due to over charging by SCE, only then do they charge a 42% fee of the monies recovered. The Board had to weigh the cost of obtaining such software vs staff hours involved vs. funds lost or gained. The company comes recommended by numerous other local agencies using the company's services.

BENEFITS OF DRINKING WATER



JUNE FARMERS' MARKET BOOTH: "Hydration for Good Health"

We have so much more to share with you on how to stay healthy and *hydrated*-- so join us at our Farmers' Market booth every Saturday in June to learn more on the benefits of drinking enough water to maximize your good health. Market hours are 8am-1PM, in the heart of Joshua Tree!

CAPITAL IMPROVEMENT AND REPLACEMENT PROGRAM (C.I.R.P.) "Tilford project transmission mainline tie-in"

More new pipe in the ground--Now you see it--soon you won't!

As JBWD's CIRP crews work diligently to continue to upgrade our pipeline infrastructure, it is notable that eventually all the labor, equipment and new pipe and materials that go into insuring fresh clean tap water for decades to come -- ultimately ends up unseen--buried deep underground.



Staging for the Tilford "transmission main tie-in"



Affixing all the parts together



Accommodating an elevation change of 3 1/2ft.



Protective wrapping of numerous "joints"

**DESERT-SMART
GARDENING TIPS FOR
JUNE**

**HISTORIC USES OF:
Creeping Thyme
*Thymus praecox ssp. articus***

June Watering Schedule: Before 9:00 AM and after 6:00 PM

Take a few minutes each week to check your landscape watering system for excess runoff or leaks. You'll save water, and save money on your water bill too.

THIS MONTH IN YOUR DESERT-SMART LANDSCAPE:

This is a good season to plant or transplant palms or cacti.

- Prune fast-growing trees like mesquite, palo verde, and acacias to reduce chances of wind damage; don't remove more than 20 percent of a plant's foliage at any one time to avoid stress or sunburn of trunk and branches
- Keep adding mulches throughout the summer to conserve water, keep roots cool, and deter weeds. Water well before applying the mulch (or through an opening in the mulch), or you'll insulate dry soil rather than moist soil
- Continue to deadhead spent flowers for a longer bloom cycle

Wow. Thyme goes way back in... *time!*

- Ancient Sumeria used thyme as a disinfectant (over 3,000 years ago!)
- Ancient Egypt (3100-332BCE) used it for embalming, killing bacteria and fungus.
- Romans (700 BCE-476CE) burned it in their temples as a sign of courage and respect and commoners would purify their homes with burning thyme smoke. They also believed it was a cure for poisoning, with emperors and politicians eating it or soaking in it for protection.
- Middle Ages (400CE-1492CE) Soldiers going into battle wore it as a badge of courage and to help them pass to the afterlife should they die in battle. They also thought it was a sleep aid to help reduce nightmares.
- During global plagues, thyme has been used for strength, protection, and relief - as well as an antiseptic.
- To date, it is used as a mouthwash, and a hand sanitizer, not to mention a common cooking herb.



June 2023 Plant of the Month

Creeping Thyme

Thymus praecox ssp. articus

Plant Form: Groundcover, perennial herb
Water Use: Very low, low
Mature Size: 2-3 in. tall x 1.5-2.5 ft. wide
Exposure: Full sun, part shade
Bloom Time: Summer (June - Aug), Fall (Sept)
Native to: Europe
Hardiness: Cold hardy to 10°F

Creeping Thyme is a low evergreen groundcover that fits into small spaces but seems to bring big smiles to everyone passing by. It has a pleasant, spicy fragrance when crushed, and it will tolerate light foot traffic to release its scent. The stems spread out horizontally, taking root to form a flat mat, easily spreading over rocks, ledges, or a dry bank. In summer, this mounding plant produces a bounty of lilac or pink flowers that attract butterflies. This low water-use plant is also low maintenance, needing only slight pruning to maintain shape. Creeping Thyme does best in well-drained soils, and suffers in wet or poorly-drained soils. Perfect in pots, between rocks or stepping stones, draping over walls or banks, as a lawn substitute, or in any small area that needs a touch of magic (try it in a fairy garden).

awac
Water-Conserve Today for Tomorrow
Alliance for Water Awareness and Conservation
For more information on low-water-use gardening, contact your local water provider or go to www.mojavewater.org/conservation/awac/

Photos © 2023 Robin Kobaly - Content © 2023 The Power of Plants (www.PowerofPlants.com)
Produced by The Summer Tree Institute (www.SummerTree.org)

Joshua Basin Water District | 61750 Chollita Rd. , Joshua Tree, CA 92252

[Unsubscribe sjohnson@jbwd.com](#)

[Update Profile](#) | [Constant Contact Data
Notice](#)

Sent bykjradnich@gmail.compowered by



Try email marketing for free today!